

# CT-732F 18 channels field power distribution module (PE)

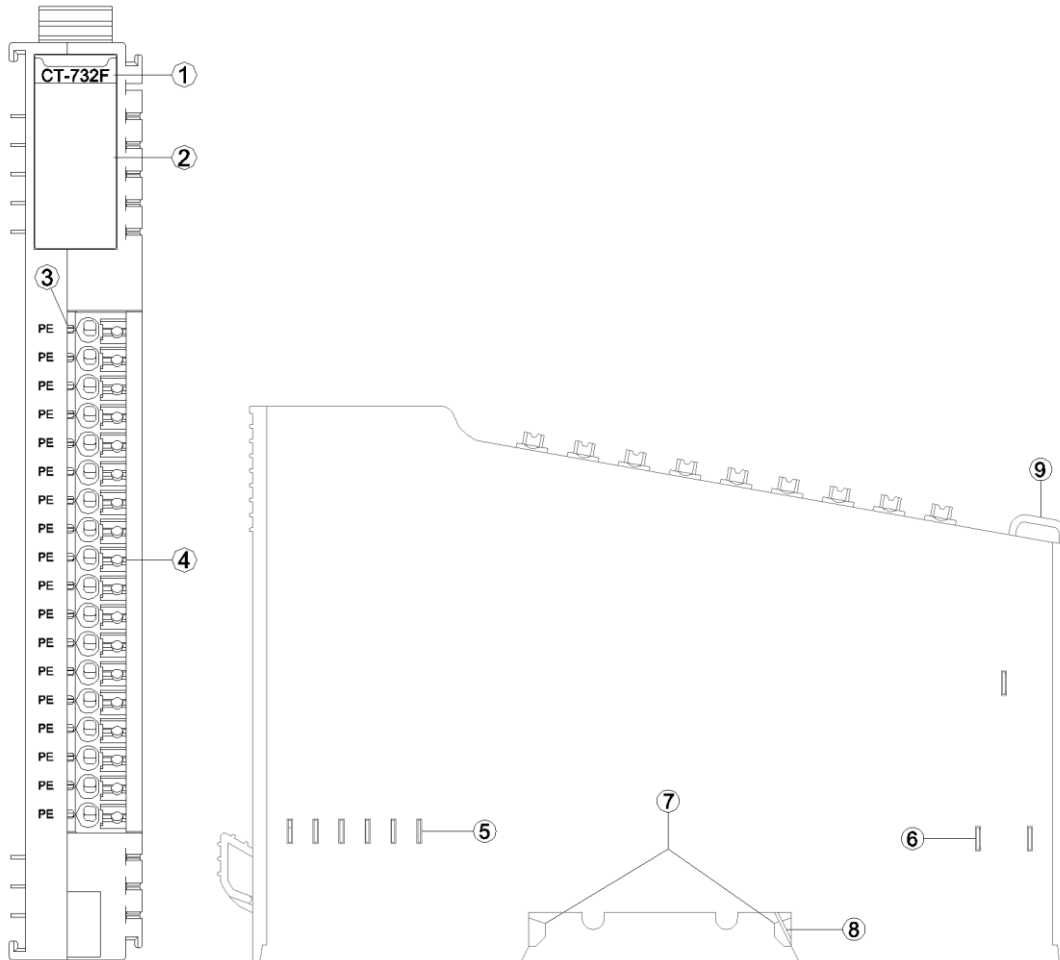
## 1 Module features

- ◆ Support on-site power distribution, output is PE.
- ◆ Support expansion of 18 channels.
- ◆ Requires no configuration and occupies no slot in configuration.

## 2 Technical Parameters

| Environment Specification |   |
|---------------------------|---|
| Operational Temperature   | -40~85°C                                    |
| Operational Humidity      | 5%~95% RH (No Condensation)                 |
| Ingress Protection Rating | IP20  |
| Output Parameters         |   |
| Channel                   | 18-channel PE potential distribution output |

### 3 Hardware Interface



- ① Module Type
- ② N/A
- ③ N/A
- ④ Wiring Terminal and identification
- ⑤ Internal Bus
- ⑥ Field Power
- ⑦ Buckle
- ⑧ Grounding Spring Sheet
- ⑨ Fixed Wiring Harness

### 3.1 LED indictor definition

No Indicator

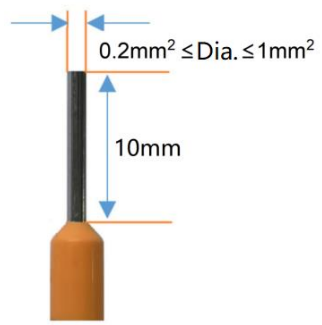
### 3.2 Terminal definition

| Terminal Number | Definition | Description |
|-----------------|------------|-------------|
| 1               | PE         | PE output   |
| 2               |            |             |
| 3               |            |             |
| 4               |            |             |
| 5               |            |             |
| 6               |            |             |
| 7               |            |             |
| 8               |            |             |
| 9               |            |             |
| 10              |            |             |
| 11              |            |             |
| 12              |            |             |
| 13              |            |             |
| 14              |            |             |
| 15              |            |             |
| 16              |            |             |
| 17              |            |             |
| 18              |            |             |

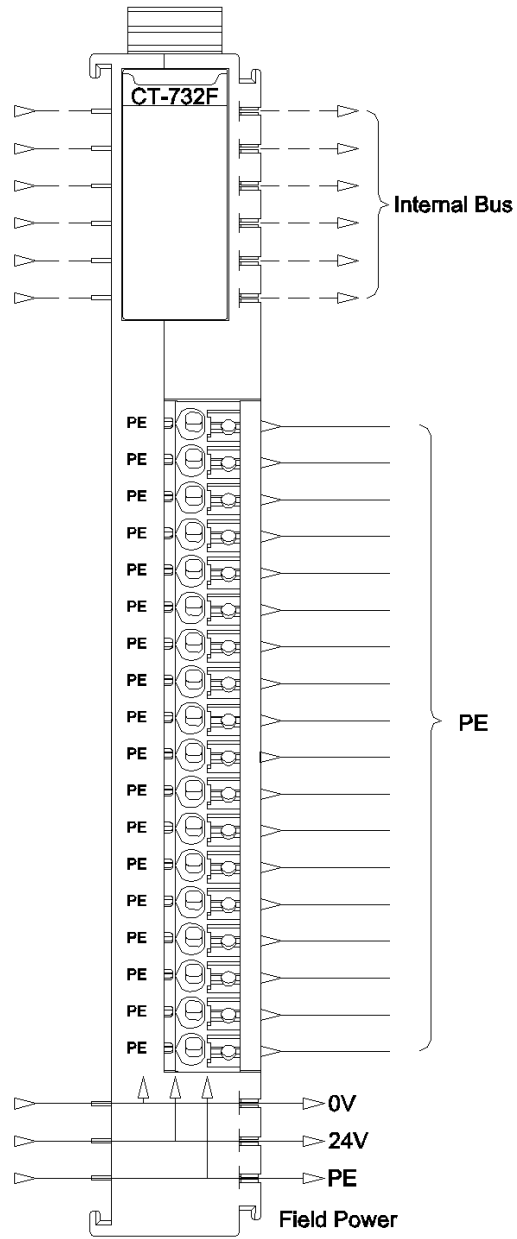
It is recommended to use cables with cores greater than 0.2mm<sup>2</sup> and smaller than 1mm<sup>2</sup>.

When connecting cables (terminals)with cores, need to check and connect them according to the corresponding node serial number.

The cold-pressed terminal parameters are as follows:



# 4 Wiring



## 5 Process data definition

No process data.

## 6 Configuration parameters definition

No configuration parameter.

## A DIMENSION

