

CT-5000 Virtual module

1 Module feature

- ◆ Module no wiring, no channel
- ◆ Modules could be used to occupy slots
- ◆ Module submodule instructions could be used to placeholder process data addresses

2 Technical parameters

General Parameter	
Power	Max.30mA@5.0VDC
Isolation	I/O to internal bus: magnetic isolation (3KVrms)
Filed Power	Nominal: 24VDC Input range: 20.4~28.8VDC
Wiring	N/A
Mounting Type	35mm DIN-Rail
Size	115*14*75mm
Weight	50g
Environment parameter	
Operating temperature of horizontal installation	-35°C~70°C
Operating temperature of vertical installation	-35°C~60°C
relative humidity	<95%RH No condensation
Storage temperature	-40°C~85°C
Storage humidity	<95%RH No condensation
Manufacturing test temperature	-40°C~75°C
Ingress Protection Rating	IP20
Virtual Parameter	
Individual input instruction data length	Max: 16 bytes Max: 16 words Max: 16 Double words
Individual output instruction data length	Max: 16 bytes Max: 16 words Max: 16 Double words
Number of input and output instructions	Max: 10

 **WARNING**

UNEXPECTED EQUIPMENT OPERATION

Do not exceed any of the ratings specified in the environmental and electrical characteristics table.

Failure to follow instructions specified by the manufacturer may result in serious consequences such as death, personal injury, or damage to equipment since the protection provided by the equipment may be impaired.

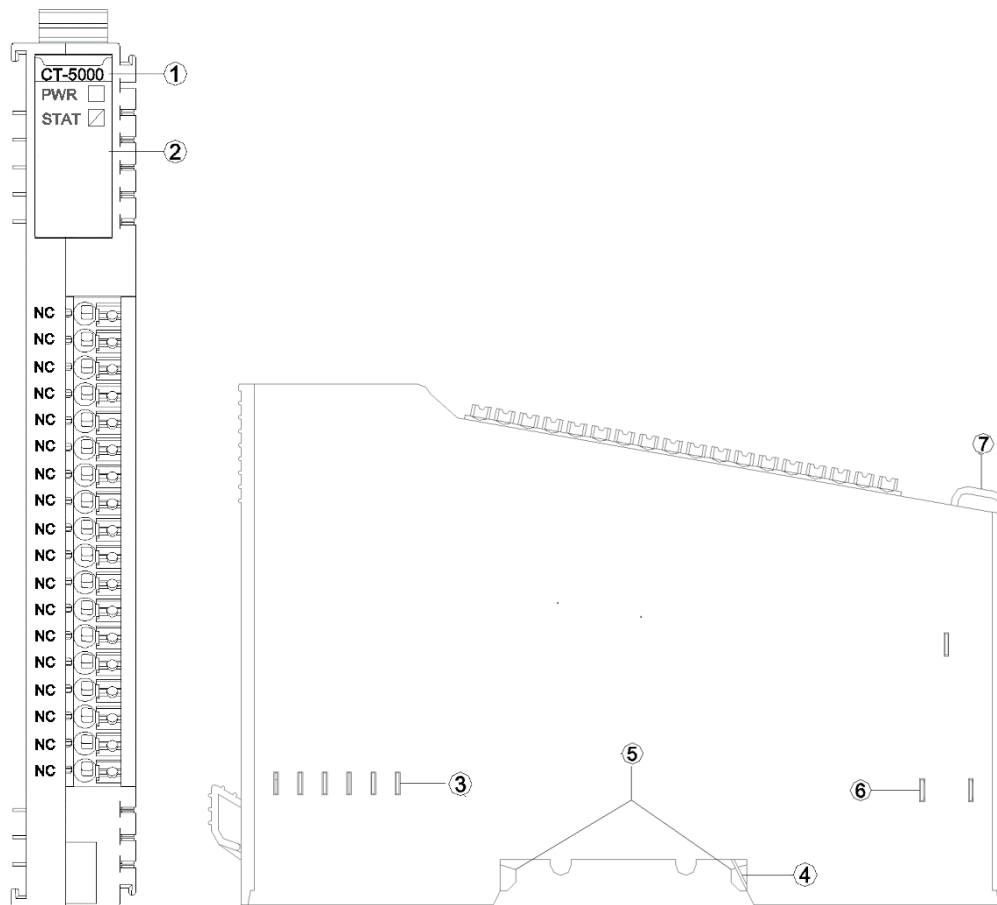
 **AVERTISSEMENT**

FONCTIONNEMENT INATTENDU DE L'EQUIPEMENT

Ne dépassez aucune évaluation spécifiée dans le tableau de caractéristiques environnementales et électriques..

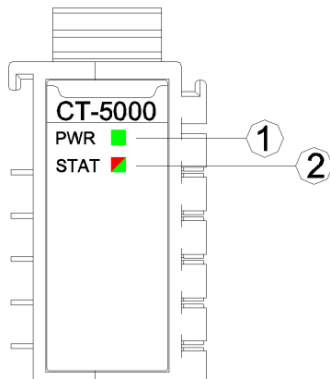
Le fait de ne pas suivre les instructions peut entraîner une défaillance de la protection fournie par l'équipement, ce qui peut entraîner des conséquences graves, comme des blessures ou des dommages à l'équipement.

3 Hardware Interfaces



- ① Module type
- ② State indicator
- ③ Internal bus
- ④ Grounding Spring Sheet
- ⑤ Buckle
- ⑥ Field power
- ⑦ Fixed Wiring Harness

3.1 LED Indicator definition



- ① Power indicator (GREEN)
- ② Module state indicator (RED/GREEN)

PW Power indicator	Instruction
ON	Internal bus supply normal
OFF	Internal bus supply abnormal
STA Module state indicator	Instruction
Slow flash (2.5Hz) (GREEN)	Module internal bus is not started
Slow flash (2.5Hz) (RED)	Module internal bus offline
ON(GREEN)	Module operation normal
Flash (2.5Hz) (RED/GREEN)	Updating mode
Flash (10Hz) (RED/GREEN)	Firmware update
Double flash (RED)	Module exception has been soft-restarted

3.2 Wiring terminal definition

NO.	Definition	Instruction
1-18	NC	No cable needed

4 Wiring

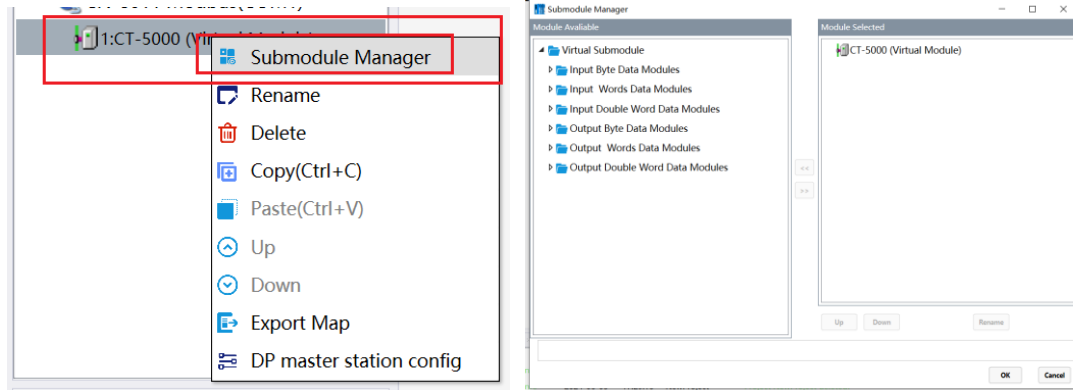
N/A

5 Process data definition

N/A

6 Configuration parameter definition

6.1 CT-5000 Submodule parameter definition



CT-5000 Submodule could add:

1. Input bytes
2. Input words
3. Input double word
4. Output bytes
5. Output word
6. Output double word

Add the maximum number of inputs and outputs of the CT-5000 submodule to 10

A Dimension drawing

